

Specifications

PLATFORM	LightSheer DUET	
HANDPIECE	ET	HS
Technical Specifications		
Laser Type	AlGaAs Diode Arrays	AlGaAs Diode Arrays
Wavelength	805 nm (nominal)	805 nm (nominal)
Spot Size	9 x 9 mm	22 x 35 mm
Repetition rate	Up to 3 Hz	Up to 3 Hz
Pulse Repetitions	1 pulse	1 - 3 pulses
Fluence	10 - 100 J/cm ²	4.5 - 12 J/cm ²
Pulse Width (OptiPulse™)	5 - 400 ms	30 - 400 ms
Peak Power	1620 W	2310 W
Comfort Management	ChillTip™ contact cooling (5°C)	Vacuum-Assist (up to 18 inHg)
Preset Parameters	Yes	Yes
Warranty	1 Year	1 Year
On-Site Service	Yes; replaceable handpiece	Yes; replaceable handpiece

Platform Specifications

Electrical	100-240 VAC, 15 A max. 50/60 Hz single-phase grounded outlet
Weight	48 kg (105 lbs)
Dimensions (WxDxH)	44 x 50 x 112 cm; (17.4 x 19.7 x 44 in)



¹ Klavuhn KG. Illumination Geometry: The Importance of Laser Beam Spatial Characteristics. Lumenis, 2001.

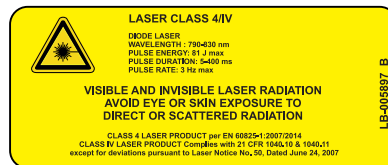
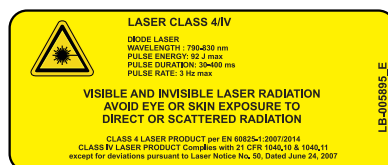
A cleared for hair removal and permanent reduction in all skin types (Fitzpatrick I-VI) and tanned skin; PFB (pseudofolliculitis barbae); superficial leg veins; benign pigmented lesions.

Indications

Hair removal, permanent hair reduction, and the treatment of Pseudofolliculitis Barbae (PFB).
Treatment of vascular lesions, including angiomas, hemangiomas, telangiectasia, leg veins and other benign vascular lesions.
Treatment of benign pigmented lesions.

Warnings and risks:

Treatment should not be attempted on patients with the following conditions in the treatment area: any active infections or inflammatory skin conditions, Dysplastic nevi, tattoos, active cold sores, open lacerations or abrasions, viral, fungal, or bacterial diseases or a history of post-inflammatory hyperpigmentation. The most common immediate responses of laser treatment for hair removal, vascular lesions, pigmented lesions are erythema, edema, perifollicular edema and perivascular edema, vascular bleaching, hyperpigmentation and hypopigmentation or textural changes of the treated areas. The complete list of contraindications and risks can be found in the LightSheer DUET user manual.



Lumenis LTD
Yokneam Industrial Park
Hakidma Street 6,
P.O.B. # 240
Yokneam 2069204,
ISRAEL
Tel: +972 4 959 9000

EC REP **Lumenis (Germany) GmbH**
Heinrich-Hertz-Str.3
D-63303 Dreieich-Dreieichenhain
GERMANY
T +49 (0) 6103 8335 0

AMERICAS
San Jose, CA, USA
T +1 408 764 3000
+1 877 586 3647
F +1 408 764 3999

EMEA
Roma (RM), Italy
T +39 06 90 75 230
F +39 06 90 75 269
Hertfordshire, UK
T +44 20 8736 4110
F +44 20 8736 4119



LUMENIS LTD 2017©

JAPAN
Tokyo, Japan
T +81 3 6743 8300
F +81 3 6743 8301

ASIA / PACIFIC
Beijing, China
T +86 10 5737 6677
Gurgaon, India
T +91 124 422 07 95
Kowloon, Hong Kong
T +852 217 428 00
F +852 272 251 51

For more information: www.lumenis.com

LightSheer® DUET™
High Speed Permanent Laser Hair Reduction

RETHINK THE BUSINESS OF LASER HAIR REMOVAL

Introducing

HIGH SPEED

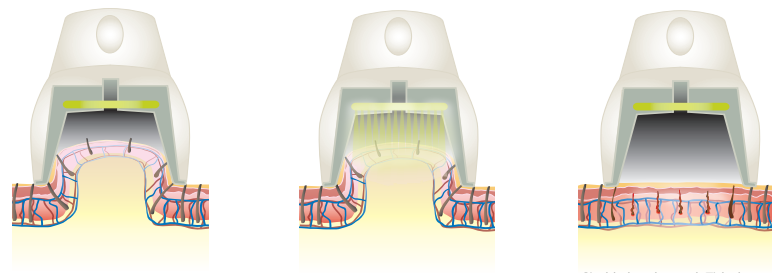
LightSheer® DUET™

Rethink the Business of Laser Hair Removal

We've revolutionized LightSheer with vacuum-assist technology and by dramatically increasing the spot size to 22 x 35 mm. The LightSheer DUET enables you to **treat backs or legs comfortably** in only 15 minutes, making hair removal profitable...without anesthetics and gels.

- No topical anesthetic required
- Reduce prep time
- Short treatment time
- Differentiate your practice
- Grow your patient base
- Grow your profits

High-Speed Integrated Vacuum Assist Technology

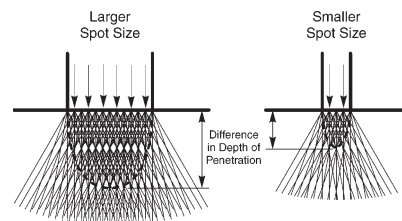


- 1) vacuum draws skin into hand-piece; 2) dermis is stretched thin; 3) hair follicle is pulled closer to energy source
- 4) melanocytes are spread apart; blood flow is constricted; 5) energy is applied
- 6) skin is released; 7) hair follicles are damaged; 8) tip moved to next location

- Reduction in competing chromophores enables more efficient delivery of laser energy
- Required fluence levels produce a comfortable procedure, eliminating the need for topical anesthetics

Depth of Penetration

Larger spot size enables greater depth of penetration, for improved absorption of energy at the target follicle¹



Versatile

The LightSheer DUET includes two **wavelength 805 nm** diode hair removal technologies on one versatile platform.



LightSheer ET

9 x 9 mm spot size

- Fluence up to 100 J/cm²
- ChillTip™ continuous contact cooling
- Pulse widths up to 400 ms



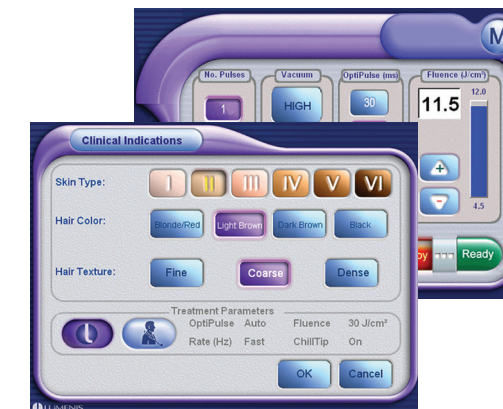
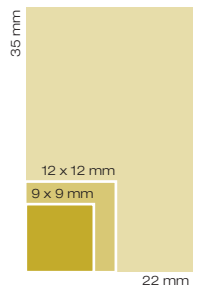
NEW

LightSheer HS

22 x 35 mm spot size

- Large spot size
- Integrated vacuum-assist technology
- Pulse widths up to 400 ms
- No cooling or anesthetics required

Actual Spot Size



Intuitive Touchscreens

- Recommended treatment settings
- Customizable treatment presets

Differentiate your practice

- Treat with 1/10 the pulses—save time and effort
- Make large-area treatments affordable for your patients

Estimated Pulses per Treated Site

Treatment Site	Est. Area (cm ²)	Spot Size:		
		9x9mm	12x12mm	22x35mm
bikini area	125	154	87	16
underarm (2)	190	235	132	25
man's back	2750	3395	1910	357
full legs (2)	8100	10,000	5695	1052

*12 x 12 mm spot size available on LightSheer DESIRE platform only

"I've used several laser hair removal devices in my practice... LightSheer's effectiveness, long lasting results, satisfied patients...all add up to repeat business and positive referrals."

Beth Haney, NP

"Patients will love it. Nurses will love it... I recently treated a large gentleman's back and in the 20 minutes it took to treat him, he was practically falling asleep – the treatment was that comfortable."

Christine Dierickx, MD

"The new LightSheer DUET is extremely well tolerated by patients. My hair removal nurse likes the single pulsing for treatment speed and patient comfort. My expectation is that the LightSheer diode will perform better as it penetrates deeper...This system is definitely worth pursuing."

Girish Munavalli, MD

"I had my back treated with the new High Speed system in 15 minutes. Normally, this would take about an hour to do, so the time savings alone is significant. ...I think it's a winner."

Mitch Goldman, MD